

aeroTAP Smart Sensor



AI × 3D Sensor Danger prediction / Reliable alerts

Reliable alerts by analyzing human postures and movements of depth images (distance data)
Essential monitoring services in elderly care facilities

MONITORING PRIVATE ROOMS
by body position and postures



MONITORING HALLWAYS
by postures and obstacles



MONITORING DOORWAYS/EXITS
abnormal movements
people counting



Monitoring by AI × Sensor



MONITORING RESTROOMS
closed space, storerooms



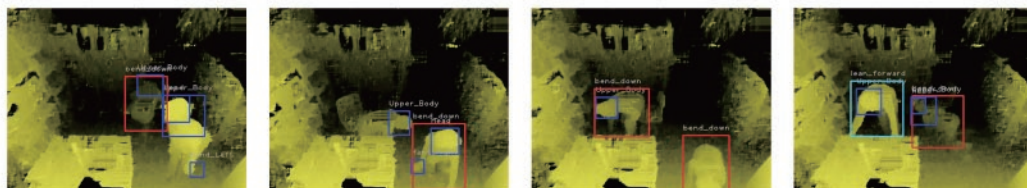
MONITORING MEDICINE STORAGE AREAS
area with dangerous material and equipment

Intelligently detects...

- those wandering around (leaving the facility)
- a fall from the bed by the distance from the edge
- the distance between the person and the wall
- suspicious movement in areas where surveillance is needed
- someone accidentally being locked up

Main features

- Privacy is protected by using depth images
- Color image can also be displayed
- AI analysis of conditions and movements
- Posture analysis using skeleton



Depth images (Sample)

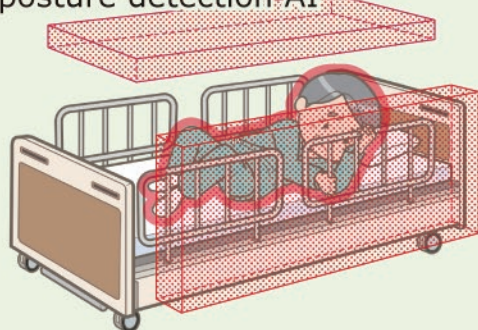
SmartCare Sensor

enables reliable detection while respecting privacy

The SmartCare Sensor technology has the following features to smartly notify alert events: posture detection AI learned from depth images, which detects events like falls and unsafe posture while respecting privacy.

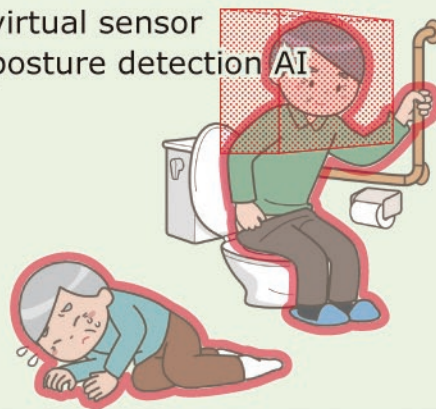
Bed exit / Wandering detection

- virtual sensor
- posture detection AI



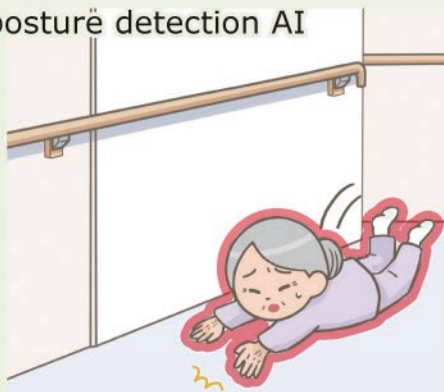
Bathroom monitoring

- virtual sensor
- posture detection AI



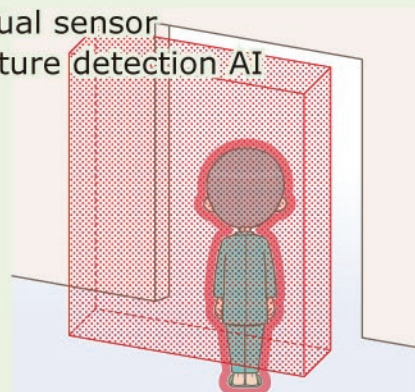
Fall / Abnormal posture detection

- posture detection AI



Wandering / Intrusion detection

- virtual sensor
- posture detection AI



SmartCare Monitoring Sensor

Power source : 5V

Connection : WiFi or LAN

Size : 14cm×10cm×9cm

Weight : about 360g

Detection range : 3m×3m×3m space

Management Dedicated Console

Windows PC

Maximum connections : 8 (Expandable)



Main Function:

- Lightweight and compact sensors can be installed and moved to any location at any time
- It can manage multiple sensors on a network, using the network function
- It is possible to integrate and connect with existing monitoring systems

<<Contact Information>>

nextEDGE Technology K.K.
Tsukuba City, Ibaraki Japan
<http://www.nextEDGEtech.com>

aeroTAP is registered trademark.
Touchless interface is registered trademark.